

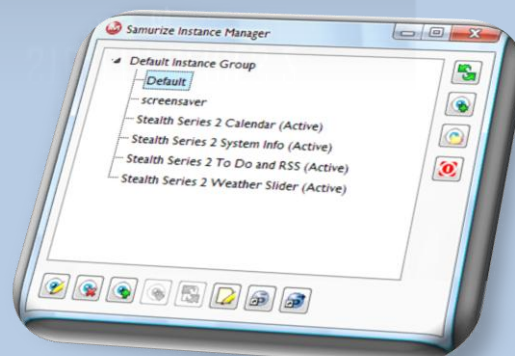
Stealth Series 2 Config for Samurize (1680x1050)



Introduction

This config is actually made up of four separate parts, each of which is running as a separate instance with the help of the Samurize Instance Manager. The reason for this is two-fold really; firstly, the 5-day weather forecast slider part needs to run as a separate instance because sliding doesn't work correctly with the other things I wanted to display on screen otherwise (that's a story for another time – perhaps even a tutorial video at some point). The second reason is that Samurize configs tend to be a little more responsive and a little less memory-intensive if they're split into smaller parts - or so I've read! Incidentally, this entire config uses around about 20Mb of RAM on my PC, to give you some idea of the performance you can expect from your system if you're running the whole thing.

If you decide you can live with a 20Mb config and you want to run all four parts like I've done, open the Samurize Instance Manager and add each individual config to the Default Instance Group, as shown here. The **Default** instance shown here within that group isn't actually running anything by the way; it just can't be removed. You could of course, set one of the other instances as the default but I find it's easy enough to see



what's what this way. The screensaver functionality of Samurize is optional though, so you might not want that in the mix.

Important Note! The Instance Manager can be a bit fickle; if it's loading more configs than you want after you boot up (which it did when I first gave this a go!) then you'll need to delete any instances you don't want to load in the Instance Manager itself AND then delete those startup entries that you don't want using your preferred method too (I use [CCleaner](#) personally). If you don't understand what I mean by that or know how to do it, I'd recommend downloading and installing CCleaner. Once it's up and running, go to **Tools > Startup** and delete the lines you don't need from the list there. It's that easy.

What's in this config?

Desktop Wallpaper:

- AllJungenSweden 1680x1050 ([found here on Flickr](#))

Fonts:

- Agency FB
- Boombox

Samurize Plugins and Scripts:

- [TextFX by Uziq](#) (included in Uziq's PluginPak)
- [ConfigRegion by Uziq](#) (included in Uziq's PluginPak)
- [EventCalendar by Uziq](#) (included in Uziq's PluginPak)
- [Gmail by Tibor](#)
- [Weather2004 by Torsius](#)
- [SaRSS by lzzzo](#)

Weather Icons

- Simple Weather Icons by Lavana ([here on DeviantART](#))

CD Art Display Skin:

- [Stealth v1](#) (my own design)

ObjectDock Package:

- [Inspiration Series 1](#) (my own design)

Other Useful Links:

- [CD Art Display](#)
- [ObjectDock](#)

Groups

These are named below exactly as you'll find them in each config for ease and convenience. Almost everything listed below is displayed with the aid of the TextFX plugin, so please bear that in mind if you find nothing appears on screen when you load it up!

Clock and Weather Slider

- **Gmail**

There's not much to this plugin; the *Unread Gmail Account* meter should be set to run the *getMessageCount* function. Supply your desired update interval (10 minutes is usually fine) then type in your username and password. The other meters (*Gmail Envelope* and *Last Check Time*) will then fall into line.



- **Slider**

If you've never used Uziq's *ConfigRegion* plugin before, this group might seem a little confusing at first. I don't want to go into too much detail here as you can probably figure out how it works just by looking closely at what I've done. The trick to making sliding parts work though, is to just remember this little rule; **if it sits within the boundary of the collapsed image whilst things are collapsed, it'll stay on screen when you expand things.**

Try moving a couple of the meters off of the *BG Collapsed* image then save and reload the config and you'll see exactly what I mean. Always bear that in mind when using the *ConfigRegion* plugin. If you need further help on this, I'd recommend reading Uziq's own readme file for the plugin, or checking the Samurize forums. If you're really stuck, drop a comment onto my blog post and I'll try my best to help you as soon as I can.

- **Time and Date**

Not much to worry about here. I made the clock face in Photoshop and everything within the group uses standard Samurize features anyway. I'm sure you can figure it out!

- **Weather CC**

This uses the *Weather2004* plugin by Torsius. The key to getting this plugin to work is to find the Location ID for your town/city. I did that by going to www.weather.com and searching for "York, United Kingdom." When the page loaded, this was the string in the address bar:

http://www.weather.com/outlook/travel/businesstraveler/local/UKXX0162?lswe=york.%20united%20kingdom&from=searchbox_localwx

Therefore, the Location ID for York is UKXX0162. Find your Location ID in the same way and change the meter parameters accordingly. It's pretty straight-forward from there.

- **Weather Forecast**

Same as above really. It'll be tedious changing all the meters and tooltips to suit your location but it'll be worth it!

It's probably worth mentioning at this point that the CD Art Display skin I created sits here on the collapsed config too, but none of it is actually part of Samurize. I'm sure that'll seem fairly obvious to some of you but y'know, just to be clear, I thought I'd mention it!

System Info

- **Core Info**

I made the gauges in Photoshop. The needles and percentages use the Processor PerfMon settings accordingly. Just delete the meters you don't need if you have less than four cores in your PC.

- **Drive Info**

Those same gauges were used here again and the meters use standard Samurize features. Nothing much to shout about otherwise!

- **Network Info**

I've used PerfMon settings here again. I set the Performance Object to *Network*



Interface, selected the appropriate instance for my wireless network adapter and then chosen *Bytes Received/sec* (or I could have chosen *Bytes Sent/sec* of course). I also went on to convert the output value from Bytes to Kilobytes to make the value a little more sensible for viewing.

- **Physical RAM Info**

Again, this is easy enough to set up without any plugins, scripts or the like. Not much worth crowing about here.

So that's both the configs on the left-hand side of the screen covered. Now let's take a look at the right-hand side.

Calendar

- **Calendar**

This whole section uses the EventCalendar plugin by Uziq. If you're not too savvy with this plugin, here's a couple of good things to bear in mind before you dig in:

- If you start changing the font face or the font size, it will almost certainly look a complete mess unless you go into TextFX and adjust the tab size accordingly.
- If you move or resize any one of the meters which make up the calendar, do the same for the other parts too. The reason is that the *Days Surrounding*, *Days This Month*, *Days Today* and *Event Markers* meters **MUST** be positioned at exactly the same X/Y coordinates and be the same size if you're to have a fully functional (and a visually acceptable) calendar.
- If you want to use mouseover events in TextFX and have some sort of tooltip on the same spot (note how I've used a back button, a forward button and separate tooltips for each of those meters, effectively using 2 mouseover events where normally only one could be used) then be sure the button is the top layer. If the tooltip precedes the button in the layer order, the button won't work when you try and click it.



- **Event Schedule**

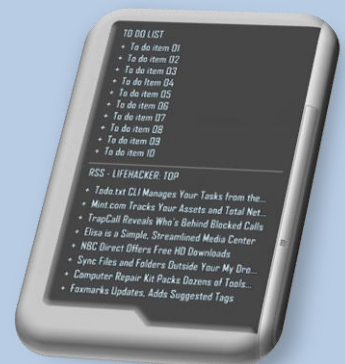
Same plugin here though I have a minor grumble with it at this point, which you'll notice too. Whilst it displays today's events without too much trouble, if you then move backwards or forwards through the calendar, it gets all confused and displays all the events for the month you're in (or at least as many as the space will allow).

To Do List and RSS

- **To Do and RSS**

This is the only group within this config and again, there's very little to say about it. The to do list is linked to a text file on my desktop called "My To Do List.txt" but can easily be pointed at any text file you like.

The Lifehacker RSS feed is supplied via the saRSS plugin by lzzzo. If you want to change the feed, click the *Source* tab and then click *Configure*. Provide a name and a URL then click the *Add* button. This will add the feed to the drop-down box at the top. You can then set up a bunch of meters to grab the information you want from that feed. Don't forget to change the drop-down options for the tooltip and click functions in there too if you want to use them.



Further Help and Information

I hope you find it easy enough to set up and tweak this config to suit your own needs. However, if there's anything further that I can help you with then please feel free to drop a comment onto the relevant post on my blog and I'll get back to you as soon as I can.

Please remember to rate my work on the Samurize website if you like it too. Thanks!